

sps timber windows



■ sash & casement windows ■ doors ■ plantation shutters ■ est. 1998

Complete door set range

Stratford™



SPS Timber external doors will enhance the appearance of any home, with 60mm section doors designed to be highly resilient, durable and secure to PAS 24:2012. Stratford™ doorsets are also available in a wide variety of styles to complement our window ranges.

Key Benefits

- Single and double doorsets to PAS 24:2012
- Secured By Design (SBD) certification available
- U-values (for the whole door) lower than 1W/m²k achievable
- Optional letterplates, spyholes, thumbturn locks and security chains available
- Internally beaded 24/28mm double glazed units for improved security, energy efficiency and acoustic performance
- Drained and vented system providing a 10 year guarantee on factory glazed units.
- Water based, virtually solvent free, environmentally friendly micro-porous paints and preservation system



PAS 24:2012 Secured By Design multi-point locking



A wide range of Handle finish options are available

Single and double doorsets, bi-fold, sliding patio doors and stable doors all available



The standard features of our Stratford™ doorset range include:

BEADING	Internally beaded as standard. Puttyline profile is used as standard to the external face with Ovolo and Lambs tongue mouldings available as options internally.
CILL OPTIONS	Flush, stub, standard and extended cills are available.
DRAUGHT PROOFING	All doors are supplied with white draught proofing to painted doors and brown draught proofing to stained doors unless a specific colour (white or brown) is specified using Aquamac™ weather seal technology. Other colours are available at extra cost.
GLAZING	Designed to accommodate a 24/28mm unit, 4mm clear outer panel, 4mm clear inner with Planitherm to one pane face to comply with Part L of the Building Regulations. Units are glazed in a GGF approved factory glazing facility using kite marked double glazed units.
HANDING	Where windows or doors are not symmetrical we can supply them with opposite handing.
HINGES	Fully adjustable stainless steel hinges come with a 10 year guarantee incorporating a phosphor-bronze hinge bearing for long service life. Finishes include gold, brushed steel (satin chrome), chrome, black and white.
IRONMONGERY	White, Black, Gold (Brass effect), Anodised Silver (Satin Chrome) and Chrome ironmongery options are available.
LOCKING	Police preferred specification multi-safe locking system. SBD certified products incorporate an anti-drill, anti-bump and anti snap TS007 3* rated cylinder.
MANUFACTURING STANDARDS	All doors are manufactured to exceed BS644. All joints are dowelled, bonded and pinned with corrugated fasteners.
PAINT FINISH	Factory fully finished as standard (incorporating base, mid and top coat). Other colours are available ask our team for details.
PRESERVATION	All timber products are supplied with factory applied Boron preservative treatment (where required). This provides a 35 year guarantee against rot and fungal attack, lifetime care package is available. As a virtually solvent-free water based preservative system, it is significantly more environmentally friendly than traditional vacuum impregnated solvent based treatments.
TIMBER	Manufactured from either FSC® or PEFC European softwood and/or FSC® or PEFC hardwood timber, in either solid and/or laminated profiles.
TOLERANCE	SPS Timber will manufacture products to customers' specified order size. If required, it is recommended that customers ensure a fitting tolerance is specified at time of order.
VENTILATION	Trickle vents are not included on door products as standard but can be included as an option.
WEATHER PERFORMANCE	Doors tested in accordance with PAS 24:2012.



Tailored products and services
All our products can be tailored to site specific requirements and our surveying, delivery and installation services will adapt according to your needs. Whether its one plot, one site or a multi-site contract, our team will deliver what you want, when you want it.

High performance specifications
Thermally efficient glazing, Secured By Design (SBD), ironmongery (to PAS 24:2012) and advanced timber preservation and coatings technology significantly enhance security and durability. By making our products last longer we reduce whole life costs.

Dobbin Strat Photography/cta architects



Design and quality

Each doorset has been specifically designed using our own bespoke profile sections which incorporate a vented drainage channel to remove any excess moisture. The rounded profile shape ensures water is shed quickly to extend coatings life and improve paint adhesion.

Laminated timber is carefully selected and engineered to meet the BS EN942 standard ensuring knots and other defects are minimised. Espagnolette hinges come with enhanced corrosion resistance and door hinges have built in anti-wear bearings for long service life.



Pas 24:2012 Secured By Design multi-point locking system



Secured By Design doors available including Bi-Fold



Integral Blinds available



Colonial Lock with thumb turn mechanism



Sliding Patio Doors available

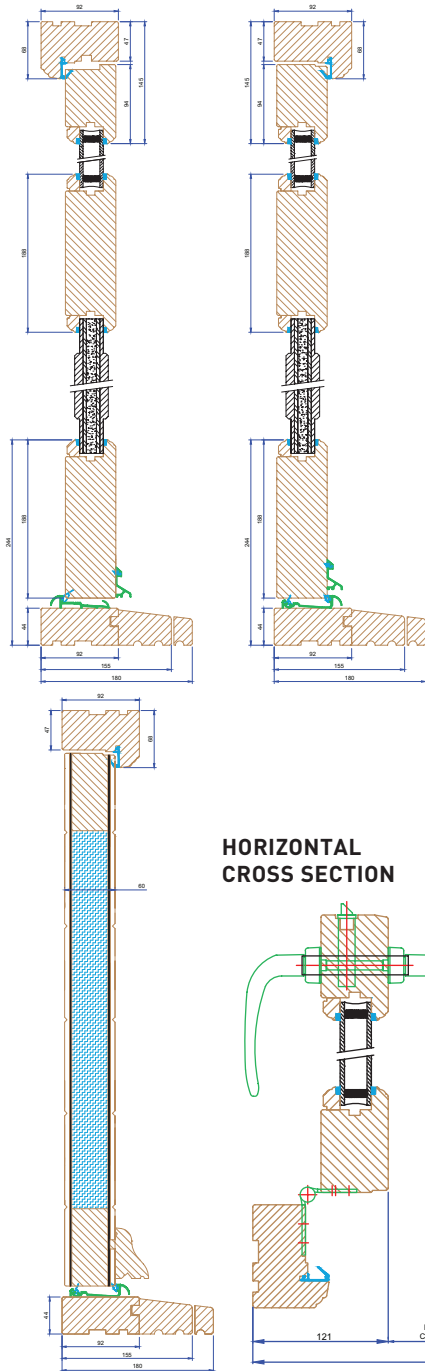


Extensive guarantees

All products come with 10 year guarantees on ironmongery and factory glazed units plus 35 years against timber frame fungal rot and insect attack, 5 years more than most competitors' products.

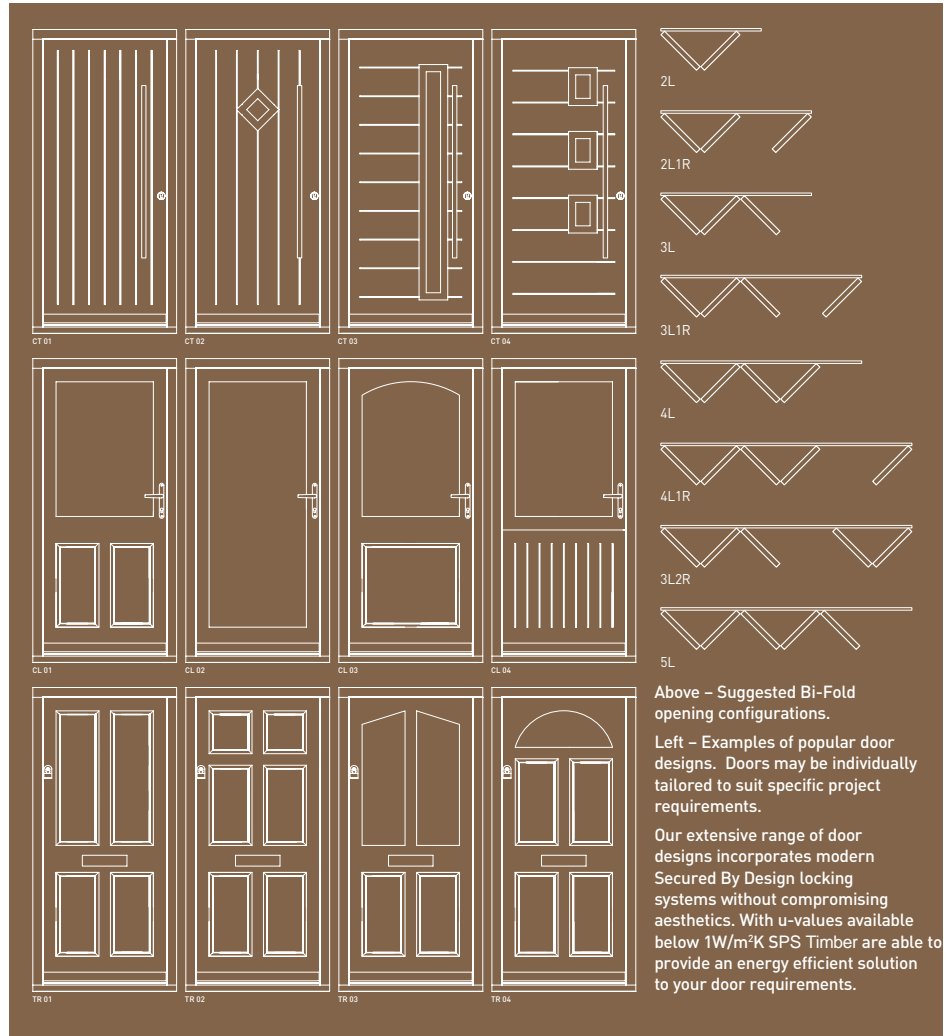
SECTION DETAILS

Open-in and open-out external doorsets are available.



Complete door set range

Stratford™



MIN/MAX MANUFACTURING SIZES

	Height**		Width
	Min	Max*	Max
Single doorset	1835	2450	1225
Double doorset	1935	2450	2450
Bi-fold doorset	1500	2450	16000+
Sliding doorset	1500	2450	6500

*Height can be increased but products are not guaranteed above 2450mm **Based on a standard doorleaf width of 862mm. (Part M) All dimensions shown in mm. Widths and heights are dependent on door leaf weight and method of construction. †5700mm maximum available as one piece frame.

