

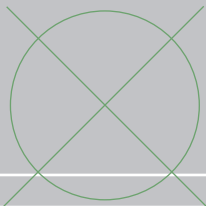
sikkens



CARE & MAINTENANCE

Important information for your
high-quality wooden windows

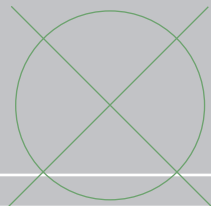




The right decision!

Congratulations on the purchase of your new wooden windows. Wood creates a cozy atmosphere. It also enhances housing quality and, consequently, your sense of well-being. And, thanks to your decision to use a sustainable raw material, you are making a valuable contribution towards protecting our environment.

We ask you to follow the advice, so that you can enjoy your wooden windows and doors over many years.



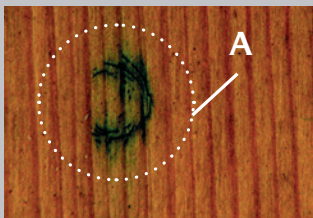
The right protection!

In order to avoid damages to the frame, sash or glass during installation, cleaning or painting, all surfaces around the window should be carefully protected. The foil and tape used must be free of plasticizers and solvents as well as be UV- and weather-proof (e.g. tesa 4438). Please never leave the wooden elements masked or covered for more than two weeks, otherwise moisture could build-up in the wood. This could cause damage to the coating. All plaster work and painting should be completed within three months of installation.

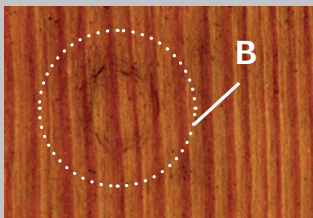
The right precaution!

Micro-cracks and small defects can appear quickly in wooden windows, as a result of hailstones, for instance. Water can penetrate in soft wood which could result in blue stain.

Hailstone damages to windows made from pinewood*



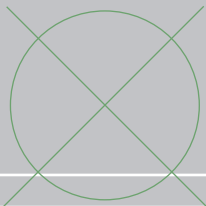
A) Damaged painted wood exposed to the elements. Discoloring disfigurements are the results.



B) Although the wood is damaged the paint film stays intact and protects the surface.

*(after a year of weathering)

But this does not have to be the case: the two Sikkens maintenance products: special cleaner and maintenance milk optimally protect windows.



The right care!

Cleaning and care with the renowned Sikkens maintenance set (consisting of: **special cleaner** and **maintenance milk** for windows) is essential for preserving the value of your high-quality wooden windows.

Whether opaque or translucent – the special cleaner and care milk duo not only protect, they also revitalize the colors and leave windows gleaming with renewed brilliance. With regular use (once a year) you not only extend the maintenance intervals but also the overall service life of your windows.

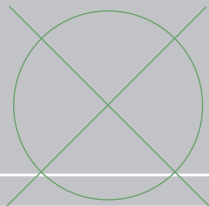
The 1-2 and done care for wooden windows

- 1) Clean the coated wooden surfaces with the special cleaner.
- 2) Evenly apply the maintenance milk with a sponge. Done!



The right lubrication!

Your windows are equipped with high-quality fittings. In order to continuously ensure their proper function all moving parts should be oiled approximately every six months. Suitable fine oil (e.g. Fenosol) can be found in specialized stores.



Professional quality

Sikkens care products can be purchased from www.sikkens-joinery.com or at specialized retailers.

The right maintenance!

The surface coating system of your wooden windows should be maintained in regular intervals. The period between maintenance coatings depends very much on the property location and the climate conditions the coating is exposed to.

Depending on the installation situation, we recommend a maintenance coat for opaque coatings after 4 to 5 years and translucent coatings after 2 to 3 years. You can use the following eco-friendly, water-borne Sikkens products for maintenance purposes:

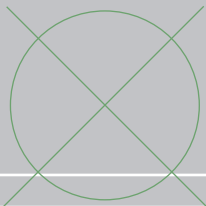
We recommend the following products for maintenance and repair (removing the paint system to the bare wood):

	Opaque systems	Translucent systems
Impregnation	Sikkens Cetol BL Aktiva ^{BP*}	Sikkens Cetol BL Aktiva ^{BP*}
Primer	Sikkens Rubbol BL Isoprimer*	Sikkens Cetol WP 510**
Mid coat (2x)	RAL 9016: Rubbol WF 310 / WF 318** Other color shades: Rubbol BL SATIN*	Sikkens Cetol WF 905 / WF 910 / WF 915**
Top coat	RAL 9016: Rubbol WF 310 / WF 318** Other color shades: Rubbol BL SATIN*	Sikkens Cetol WF 905 / WF 910 / WF 915**

* Further product information at [www.sikken\[architectural paints\]](http://www.sikken[architectural paints])

** Further product information at www.sikkens-joinery.de

The coating systems demonstrated do not claim to be complete; they are to be viewed as possible examples. Due to the many possible substrates and object requirements every user should check the Sikkens materials to ensure that they are suited for the intended purpose. Please contact your window manufacturer for further information. This information does not constitute a contractual relationship and does not form any entitlements. All further technical details can be found in the Technical Data Sheets at www.sikkens-joinery.com or www.sikkens.com.



Applying a maintenance coat is quite simple:

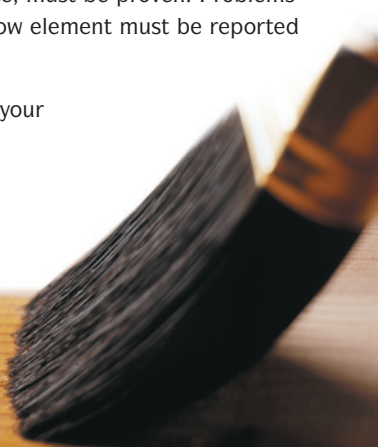
1. Clean the old coating layer and sand gently with P200 - 220 grit sandpaper.
2. Apply one or two coatings onto the sanded substrate in the required color shade using a Sikkens quality product (see previous table, top coat).

The right advice!

Even with the best products, complaints can occur on rare occasions. In order to resolve them as quickly and comprehensively as possible, a few things are to be considered: first of all, the recommendations for maintenance and care must be carried out correctly.

Furthermore, the surface coating system must be annually checked for mechanical damages. Immediate, professional maintenance of even small damaged areas is urgently necessary and, in the event of a dispute, must be proven. Problems with the coating and/or the window element must be reported immediately to the manufacturer.

We wish you much pleasure with your high-quality wooden windows.





The right benefits!

You can actively contribute towards the upkeep of your living climate. For example, with regular ventilation. Because many everyday activities such as showering, cooking, doing the laundry, etc. make the room more humid. The human body itself also creates moisture, an average of one liter per night. If this moisture cannot escape, then the room climate suffers. And that not only reduces well-being, it also has real risks. In order to avoid mould – e.g. on the wooden elements or plaster regular ventilation with widely opened windows is recommended. In winter three times a day for six minutes, at other times of year for ten minutes.

The right ventilation:

- as often as possible
- as briefly as possible
- as thoroughly as possible (cross ventilation)



sikkens

Provided by:

Akzo Nobel Wood Coatings GmbH

Akzo Nobel Wood Finishes and Adhesives
Sikkens Joinery
Düsseldorfer Straße 96-100
40721 Hilden · Germany
Phone: +49 (0) 2103 77 800
Fax: +49 (0) 2103 77 242
sikkens-holzbau-info@akzonobel.com
www.sikkens-joinery.com

Akzo Nobel Industrial Coatings Ltd

Akzo Nobel Wood Finishes and Adhesives
Unit 04A, Mercer Way
Shadsworth Business Park
Blackburn, Lancashire
BB1 2QZ · United Kingdom
Phone: +44 (0) 1254 687950
Fax: +44 (0) 1254 687960
sales.shadsworth@akzonobel.com
www.sikkens-joinery.uk

